

First Baptist Academy



**KINGDOM EDUCATION
VOLUNTEER TRAINING**

Official Version

Updated 09/16/09 - TWR

Terms Defined



1. What is it?

Kingdom Education

“The life long process of leading a child to Christ, building a child up in Christ, and equipping a child to serve Christ.”

Terms Defined



The Kingdom of God

“The reign of God through Jesus Christ in the life of a believer as evidenced by God working in, through and around the individual.”

Terms Defined



- **Culture** – “who you are” as defined by your philosophy and worldview
- **Community** – “who you are” as defined by your constituency
- **Climate** – “who you are” as defined by your philosophy, worldview, your staff, your constituency (parents & students), and your curriculum/programs

Understanding the Issues



2. Why is it necessary?

We are engaged in a culture war

- The two opposing sides have opposite worldviews
- The target is our children
- The major battlefield is education

Understanding the Issues



3. How is a kingdom education school different from any other?

Our Goals

- Present a **kingdom-focused** culture
- Promote a **kingdom-focused** culture
- Practice a **kingdom-focused** culture
- Preserve a **kingdom focused** culture

Understanding the Issues



4. Is there something I need to do?

If you have not already read Kingdom Education get a copy today!

Purpose in your heart to do everything God is calling you to in preparing your child for a position of leadership in God's kingdom.

“The Big Picture”



If our focus is clear,
Our priorities pure
And we understand our roles....

The culture of the school will be both
predictable and perpetual!

Ten Guiding Principles



#1 “The education of children and youth is the primary responsibility of parents.”

Ten Guiding Principles



#2 “The education of children and youth is a 24 hours a day, 7 days a week process that must take place from birth through maturity.”

Ten Guiding Principles



#3 “The education of children and youth must have as its primary goals the salvation and discipleship of the next generation.”

Ten Guiding Principles



#4 “The education of children and youth must be based on God’s Word as absolute truth.”

Ten Guiding Principles



#5 “The education of children and youth must hold Christ preeminent in all of life.”

Ten Guiding Principles



#6 “The education of children and youth must not hinder the spiritual and moral development of the next generation.”

Ten Guiding Principles



#7 “The education of children and youth, if and when delegated to others by parents, must be done by teachers chosen with utmost care to ensure that they all follow these principles.”

Ten Guiding Principles



#8 “The education of children and youth results in the formation of lifestyles or worldviews that will be patterned after the belief systems and worldviews of their teachers.”

Ten Guiding Principles



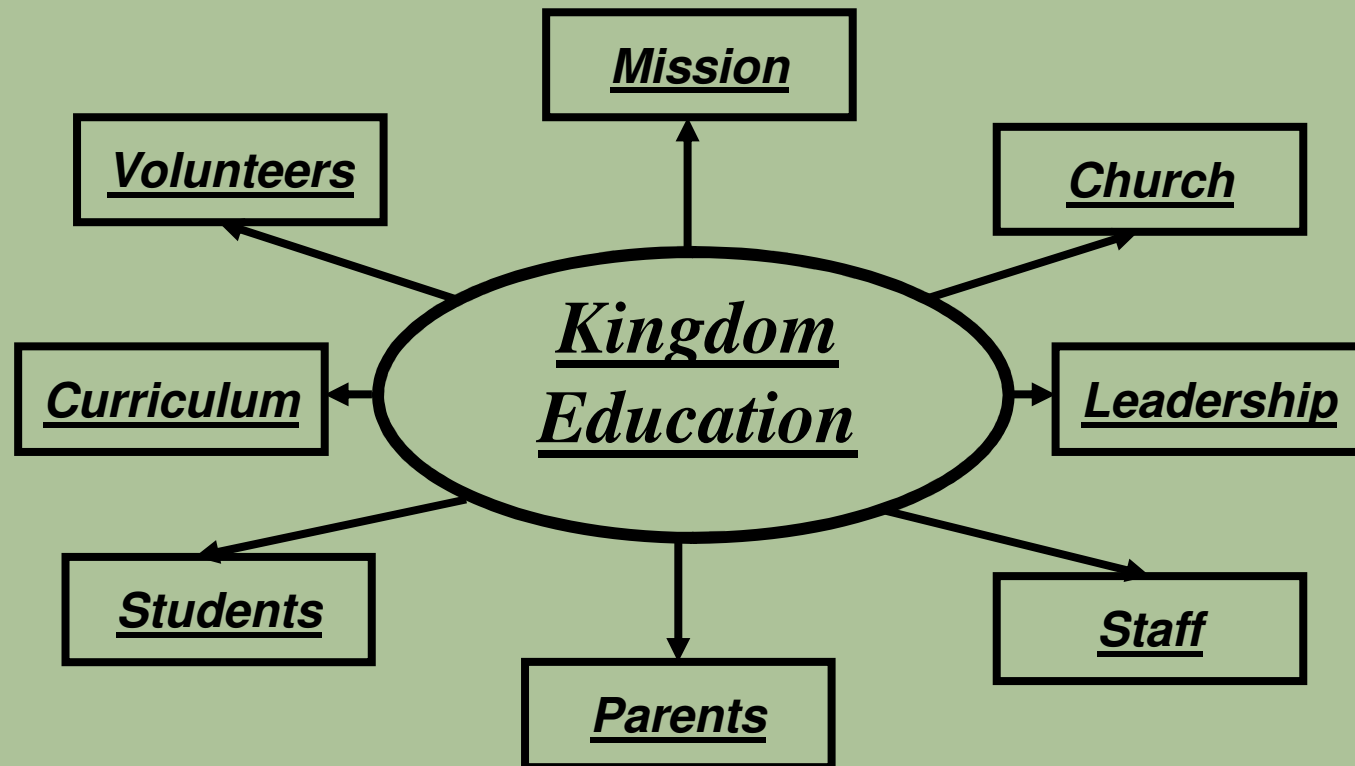
#9 “The education of children and youth must lead to true wisdom by connecting all knowledge to a biblical worldview frame of reference.”

Ten Guiding Principles



#10 “The education of children and youth must have a view of the future that includes the eternal perspective.”

Our Model



First Baptist Academy

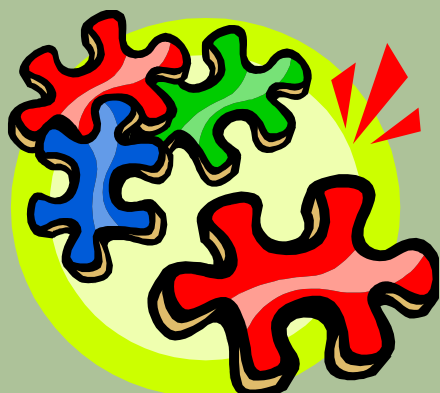


BIBLICAL

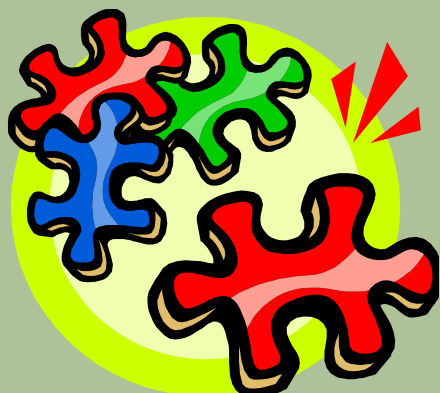


WORLDVIEW

What is a Worldview?



World View is the picture on the box of a thousand-piece jigsaw puzzle that you look at before you put the puzzle together.



World View is a big picture of life and reality through which an individual understands and interprets life.

Everyone Has a Worldview



All world views start with basic assumptions about life that are held by faith, regardless of the type of world view held. These basic assumptions are made in five areas:

God

Man

Creation

Moral Order

Purpose

Why Teach a Biblical Worldview?



We are losing our children because they haven't been taught to think and understand what they believe and why they believe it. (world view) I Peter 3:15

Why Teach a Biblical Worldview?



We all need a mature faith that can give answers and reasons for that faith. Parents and students need to be trained in Biblical Worldview. I
Peter 1:13

Why Teach a Biblical Worldview?



We live in a day when our culture is aggressively planning how to capture the imagination and beliefs of our children. Colossians 2:18

Why Teach a Biblical Worldview?



Our young people are entering universities unprepared and passive in thinking, drinking in teaching that will destroy their lives. II
Corinthians 10:5

Who is the Authority?



Our authority for what we believe
is not man but the Word

Genesis 1:1

John 1:1-3

Hebrews 1:1-3

Revelation 19:11-13

What is a Volunteer?



A volunteer is defined as any non-paid person appointed by the principal or member of the school staff that *performs assigned duties* that support our students and staff.

Level I



- Has direct contact with students within the immediate presence of an FBA employee
- Is assigned duties, such as an office assistant, that would not necessarily put you in direct contact with students

Other Level I Assignments



- Working on a TAPT event such as the Walk-A-Thon
- Picture Day helper
- Working the cookbook table at Grandparent's Day
- Class party volunteer
- Assisting a teacher with copies, cutting, etc. outside of classroom

Level I Requirements



- Completed Application
- Two Personal References
- Photo ID

Level II



A Level II volunteer
is one who has
direct contact with students
outside of the immediate presence
of an FBA staff member

Level I Requirements



- Classroom Tutoring
- Assisting in the School Clinic
- Reading Helper outside the classroom
- Overnight Field Trips
- Coaching Assistant in Sports Program
- Long-term Mentoring
- Classroom Coverage in the absence of the Teacher

Level I Requirements



- Completed Application
- Two Personal References
- Photo ID
- Criminal History Record Check Waiver Agreement
- Criminal History Update
- Fingerprinting and clearance by the FL Dept of Law Enforcement (FDLE)
- FBA Clearance

Why Such an Extensive Clearance?



Why do I need such an extensive clearance to work with my child or his/her classmates?

- Volunteering denotes a high level of trust and responsibility
- A commitment to the safety and welfare of our children is paramount
- Protection for FBA students
- Protection for the FBA volunteer

How Do I Get Started?



- Complete the application, providing references and proper identification
- Return your application to Cindy Case in the Business Office
- Indicate your preference for screening, either Level I or Level II
- If Level II is chosen, schedule a time to have your fingerprints taken

Thank You!



Thank you for expressing an interest in volunteering at First Baptist Academy!

We look forward to a strong partnership as we seek to develop students with Christian character and a biblical worldview equipping them for life, learning and leadership.